

Scotland's  
Studio

# Scotland's Studio

**Scotland's Studio is located in the vibrant centre of Glasgow, Scotland's UNESCO City of Music.**

Boasting an acoustically adjustable, flexible auditorium with world-class recording facilities, Scotland's Studio is also home to the world-renowned Royal Scottish National Orchestra. With an impressive back-catalogue of recordings and awards, the Royal Scottish National Orchestra is known for the high quality of its performances and is the perfect choice to record your project.

Whether it's film or game soundtracks, chamber or full orchestra, get in touch with us today and we'll help bring your project to life.

**scotlandstudio.com**

**'We were all blown away by the sheer passion and energy and verve of the performance of the RSNO. I hope we come back many times.'**

**Kevin Costner**





‘The recording hall brings the music to life, contributing to a lush and cinematic sound that rivals the best studios in the world’

**Christopher Lennertz**, Composer

*The Curse Of Bridge Hollow & When You Wish Upon A Star Disney 100 Anniversary*



# Studio

Purpose-built for the Royal Scottish National Orchestra in 2015 in partnership with Arup acousticians, the Studio provides the perfect space for recording.

- \_ Structurally isolated on special anti-vibration mountings, the hall is protected from all external sounds, whilst custom acoustic vents allow for quiet air handling.
- \_ Moving walls allow the space and acoustics to be configured for chamber (walls in) or full orchestral (walls out) performances.
- \_ A matrix of acoustic reflectors and absorbent wall banners can be adjusted to fine tune the acoustic response of the hall.
- \_ The Studio can comfortably hold 70+ musicians.

Further spaces are available as part of the hire, including three break-out recording spaces wired through to the Control Room and additional practice rooms.

## Full Studio

W19.7m x D30.5m x H12.5m

## Free floor space

W19.7m x D20m x H12.5m



# The Iain & Pamela Sinclair Control Room

At the heart of the control room is a 96-channel SSL Duality Delta mixing console, with Dolby ATMOS monitoring by ATC and interfacing to the digital world by DAD (the creators of the AVID MTRX). The ATC 7.1.4 monitoring is complemented by acoustic design by Nick Whitaker, whose client list includes Abbey Road Studios, Angel Studios, and CTS Watford Colosseum. For microphone inputs we have 80 DAD remote mic pre-amps and eight channels of Neve 1073 on stage, in addition to 96 channels DA and 32 channels AD interfacing the SSL console to the Dante network. The incredibly flexible routing system allows any signal from the desk or studio floor to appear anywhere in the DAW, be it Pro Tools, Pyramix or Sequoia.

The control room includes a 165-inch virtual window into the studio floor, which can also display film, TV and video game picture. Several additional screens can show remote, conductor and isolation booth camera feeds.

The Iain and Pamela Sinclair Control Room is funded by

**RSNO Foundation**  **Scottish Enterprise**



## Control Room

Console: SSL Duality Delta  
96-channel

7.1.4 monitors: ATC (flush-mount  
SCM100A for LCR, SCM45A for  
surrounds and heights, JBL SUB18  
for LFE)

AD/DA conversion: DAD AX32, AVID  
MTRX and Neve 1073 OPX Dante

Main recording computer: Apple  
Mac Pro with AVID Pro Tools  
Ultimate 2HDx

Windows computer with merging  
Pyramix Masscore Premium v14  
and MAGIX Sequoia v13

Apple: Mac Mini with video  
conferencing and remote utilities

Lexicon L960 surround reverb unit  
with LARC2 remote

2 x Bricasti M7 reverb units

165-inch main virtual window video  
wall and six 55-inch additional  
displays, fed from an anything to  
anywhere video matrix

Various mic-lines and tie-lines  
to the Studio, and other links  
throughout the Glasgow Royal  
Concert Hall

Various monitoring headphones,  
including 2 x Sennheiser HD600,  
2 x Sony MDR-7506, BeyerDynamic  
DT990 Pro

## Microphones

### Decca Tree

5 x Neumann M150

5 x Schoeps 2H  
(with 40mm spheres)

### Schoeps

14 x Schoeps 21 wide cardioid

4 x Schoeps 22 open cardioid

15 x Schoeps 4 cardioid

6 x Schoeps 41 hypercardioid  
(4 x MK41, 2 x MK41V)

4 x Schoeps 8 fig-8

### Other Small Diaphragm Condenser

7 x DPA 4006

2 x DPA 4011

2 x Sennheiser 8040 cardioid

2 x Sennheiser 8050 hypercardioid

2 x Sennheiser 8090 wide cardioid

2 x Sennheiser MKH800 TWIN

8 x Neumann KM184 cardioid

2 x Earthworks QTC30 omni

### Large Diaphragm Condenser

2 x AKG C414 B-ULS

4 x AKG C414 XLS

4 x AKG C414 XL-II

4 x Neumann U87 Ai

### Dynamics

2 x Royer R122 Mk-II ribbon

1 x Royer SF24 stereo ribbon

8 x ST&C 4038 ribbon

3 x Sennheiser MD421-II

3 x Shure SM57

3 x Shure SM78

1 x AKG D112

### DIs

3 x EMO 520 mono passive DI

2 x EMO 525 stereo passive DI

## Stands

42 x K&M standard mic stand w/  
boom (210/2 or 210/9)

10 x K&M tall mic stand w/ boom  
(21021)

9 x Manfrotto master stands

1 x K&M Master stand  
(21231/20811)

5 x K&M kick stand w/ telescopic  
boom (259)

9 x Schoeps 1.2m active extension  
tube for MK/CMC microphones (RC  
1200 1.2m tube, STR 350 35cm  
rod, BF 250 round base, RG 8 chuck)

4 x Schoeps 0.7m active extension  
tube for MK/CMC microphones (RC  
700 0.7m tube, STR 1000 1m rod,  
BF 250 round base, RG 8 chuck)

Carbon Fibre Decca Tree mount

## Foldback

85 x 'DT152' (single-ear-modded  
DT150)

20 x DT150

Plus various displays fed from a  
matrix switcher, with computer  
outputs, video playback, and PTZ  
cameras as inputs.

# Royal Scottish National Orchestra

Formed in 1891, the Royal Scottish National Orchestra is one of the world's leading symphony orchestras. The Orchestra performs across Scotland, regularly appearing at the BBC London Proms and Edinburgh International Festival. Recent international tours have included visits to the USA with Danny Elfman and his Violin Concerto *Eleven Eleven*, and two tours of Europe with RSNO Music Director Thomas Søndergård, and internationally renowned violinists Nicola Benedetti and Ray Chen.

With an impressive back-catalogue of recordings and awards, including eight GRAMMY nominations, the Royal Scottish National Orchestra is the perfect choice to record your project. From full symphony orchestra to chamber ensembles, you can rely on the Royal Scottish National Orchestra to make sure your recording is a success.

Visit [scotlandstudio.com](https://scotlandstudio.com) to watch the Royal Scottish National Orchestra and Scotland's Studio in action.



# Recent Recordings



## Horizon: An American Saga

**John Debney** Composer  
**Royal Scottish National Orchestra**

Released: June 2024

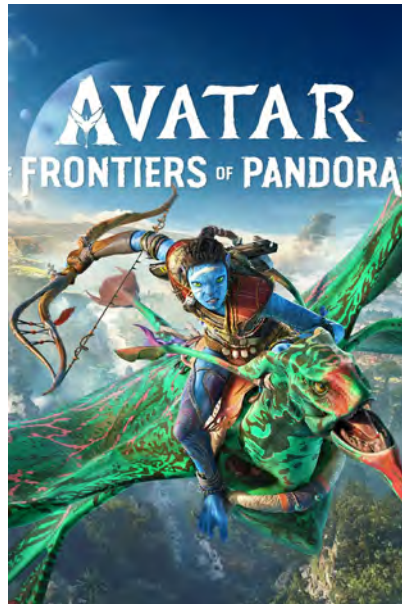


**UBISOFT**

## Avatar: Frontiers of Pandora

**Pinar Toprak** Composer  
**Royal Scottish National Orchestra**

Released: December 2023

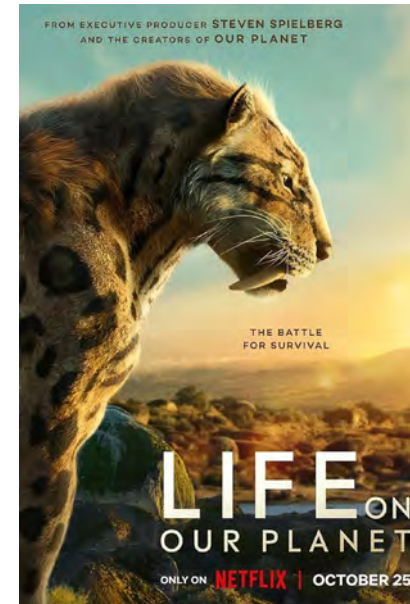


**NETFLIX**

## Life on Our Planet

**Lorne Balfe** Composer  
**Royal Scottish National Orchestra**

Released: October 2023



# Recent Recordings



## When You Wish Upon A Star for Disney 100

**Christopher Lennertz** Composer  
**Royal Scottish National Orchestra**

Released: May 2023



## Danny Elfman Violin Concerto *Eleven Eleven*

**Sandy Cameron** Violin  
**John Mauceri** Conductor  
**Royal Scottish National Orchestra**

Recorded and mixed by Peter Cobbin  
and Kirsty Whalley

Released: March 2019



## Chopin Piano Concertos

**Benjamin Grosvenor** Piano  
**Elim Chan** Conductor  
**Royal Scottish National Orchestra**

Released: February 2020

Awards: Gramophone Concerto Award,  
Diapason d'Or de l'année





**‘I’ve been so amazed  
by the musicians  
and the quality of  
the hall that we  
recorded in’**

**Pinar Toprak**, Composer  
*Avatar: Frontiers of Pandora*

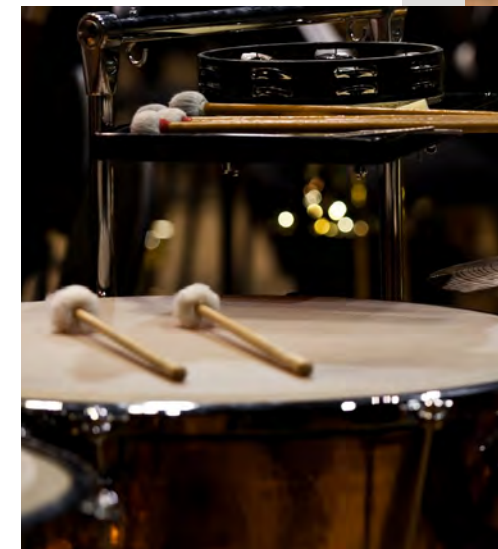
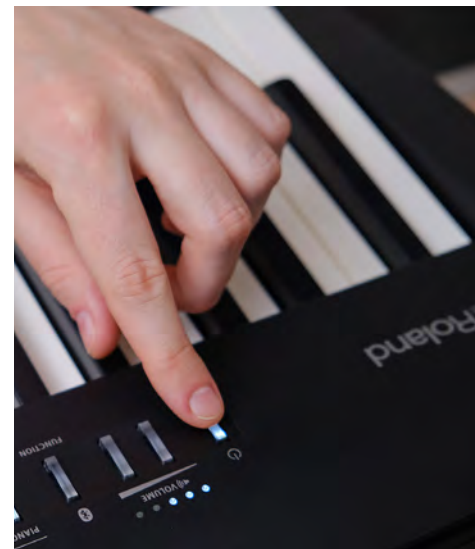
# Instruments

As a professional recording and performing symphony orchestra, the Royal Scottish National Orchestra owns a vast array of instruments which are available for hire. These include:

- \_ Two Steinway D concert grand pianos
- \_ One Steinway B concert grand piano
- \_ Five upright pianos
- \_ Schiedmayer celeste
- \_ Nord 2 keyboard
- \_ Roland RD 700 SX keyboard
- \_ Tuned and untuned percussion equipment (including Latin)

A full list of instruments is available on request.

All hires are subject to availability.



‘[The Orchestra is]  
one of the best in  
the world... they’ve  
got a great recording  
studio facility. They’re  
really on the map for  
Hollywood now’

**Lorne Balfe**, Composer  
*Argylle & Life on Our Planet*



# Facilities

Our home is your home. At Scotland's Studio we're delighted to welcome you and help make your project run smoothly and comfortably.

## **Guest Artist Rooms**

Conductor's Room

W3.20m x D2.45m x H2.25m

Soloist's Room

W3.20m x D2.45m x H2.25m

Backstage behind the Studio are two en-suite dressing rooms, perfect for your guest artists to relax and prepare in.

## **Green Room**

W25.6m x D5.85m x H2.35m

With easy access to the Studio, our open-plan green room can comfortably seat 30+ and has kitchen facilities including several microwaves, fridge, hot water on tap, urns, crockery and cutlery. Catering can be supplied on request.

## **Quiet Room**

W5.85m x D3.85m x H2.20m

## **Office Support**

Copying facilities are available should any last-minute alterations to score/parts be required. There is also the option to discuss potential support from our on-site Music Library.



# Location

Scotland's Studio is located in the vibrant centre of Glasgow.

With major public transport links within walking distance, as well as Glasgow International Airport located under half an hour away, Scotland's Studio is a destination for both local and international talent.

- \_ **Glasgow Queen Street Station** – 7-minute walk, 3-minute drive
- \_ **Glasgow Central Station** – 9-minute walk, 10-minute drive (regular trains to London, with an average journey time of under 5 hours)
- \_ **Glasgow International Airport** – 15-minute drive, 25 minutes via public transport
- \_ **Buchanan Street Subway** – 6-minute walk with links to the rest of the city

The central location of the Studio offers many accommodation options including the 5 star Kimpton Blythswood Square Hotel a 12-minute walk away and the Glasgow Central Holiday Inn just off Killermont Street. The city and surrounding rural areas are also home to a number of self-catered options should you hope to explore further afield throughout your time working at the Studio.





To enquire about booking Scotland's Studio or hiring the Royal Scottish National Orchestra, please contact:

Tammo Schuelke tammo.schuelke@rsno.org.uk +44 (0)7401 464906

**scotlandstudio.com**

Version 1.6 2024

**The Iain and Pamela Sinclair Control Room** is funded by

**RSNO Foundation**  **Scottish Enterprise**

Scotland's Studio is partially supported by the  
**DigitalBoost Development Grant**

The RSNO is supported by the Scottish Government

 **Scottish Government**  
**Riaghaltas na h-Alba**